

Notice to introduce Filestream SQL Service Features

Hivedome will be introducing support for Microsoft Filestream for SQL feature in Trader Desktop 8.12.0.

Background

As part of the ITAS Roadmap Hivedome have been looking at alternative storage repositories to complement the default use of Windows Folders. The first of which to be integrated into Trader Desktop is MS SQL FileStream.

The FileStream feature enables SQL Server-based applications to store unstructured data, such as documents and images, within a Database.

In ITAS terms this allows documents to be generated through standard DocGen processes and automatically stored in a designated Database, as well as offering a repository for other files to be uploaded to.

Being 'contained' within a Database has many advantages:

- Backup/Restore functions can include these documents
- Enhanced full-text search capabilities provided through SQL meta data (indexing)
- Optimisation of disk space as document data is compressed into a single Database file (similar to those used for transaction data)
- Logging/Auditing of file creation/update activity
- Version-control and recycling options

And being part of ITAS Services means that it can be configured to work with other services:

- Alerts & Notifications - The ITAS Notification (Windows) Service can be configured to publish messages whenever a file is created in the designated file system; subscribers can be Trader Desktop users or middleware processes
- Data Processing Service - Can be configured to respond to a Notification and perform a task or series of tasks, e.g. indexing, targeted notifications, state management
- ITAS API, Data Portal - Documents stored within a Database are accessible through various methods; seamless system-to-system (B2B) through API or manual upload/download through Data Portal

Requirements

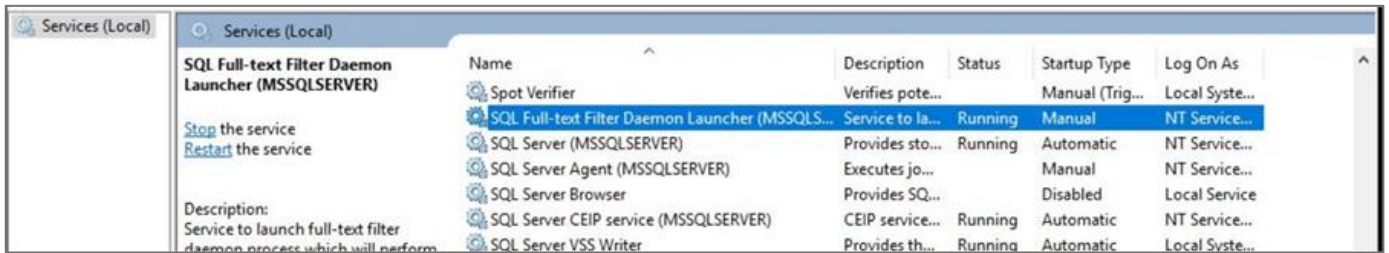
Prior to the deployment of Trader Desktop 8.12.0, you must ensure that Filestream is enabled on your SQL server/s. If this is not already enabled, then please ensure the following actions are completed:

1. Install the Full Text Search feature from SQL Installation media
2. Enable Filestream via SQL Server Configuration Manager
3. Restart the SQL Server Service to complete the set up

Although these actions will enable Filestream on the SQL server and therefore enable Trader Desktop 8.12.0 to be deployed, ITAS documents will continue to be stored within the Windows file structure until your ITAS config is updated to direct them to the new ITAS-Documents database.

Installing Full Text Search

To check whether Full Text Search is already installed, check Windows services. For the Full Text Filter Daemon Launcher service. If this service is not installed please proceed with the installation.

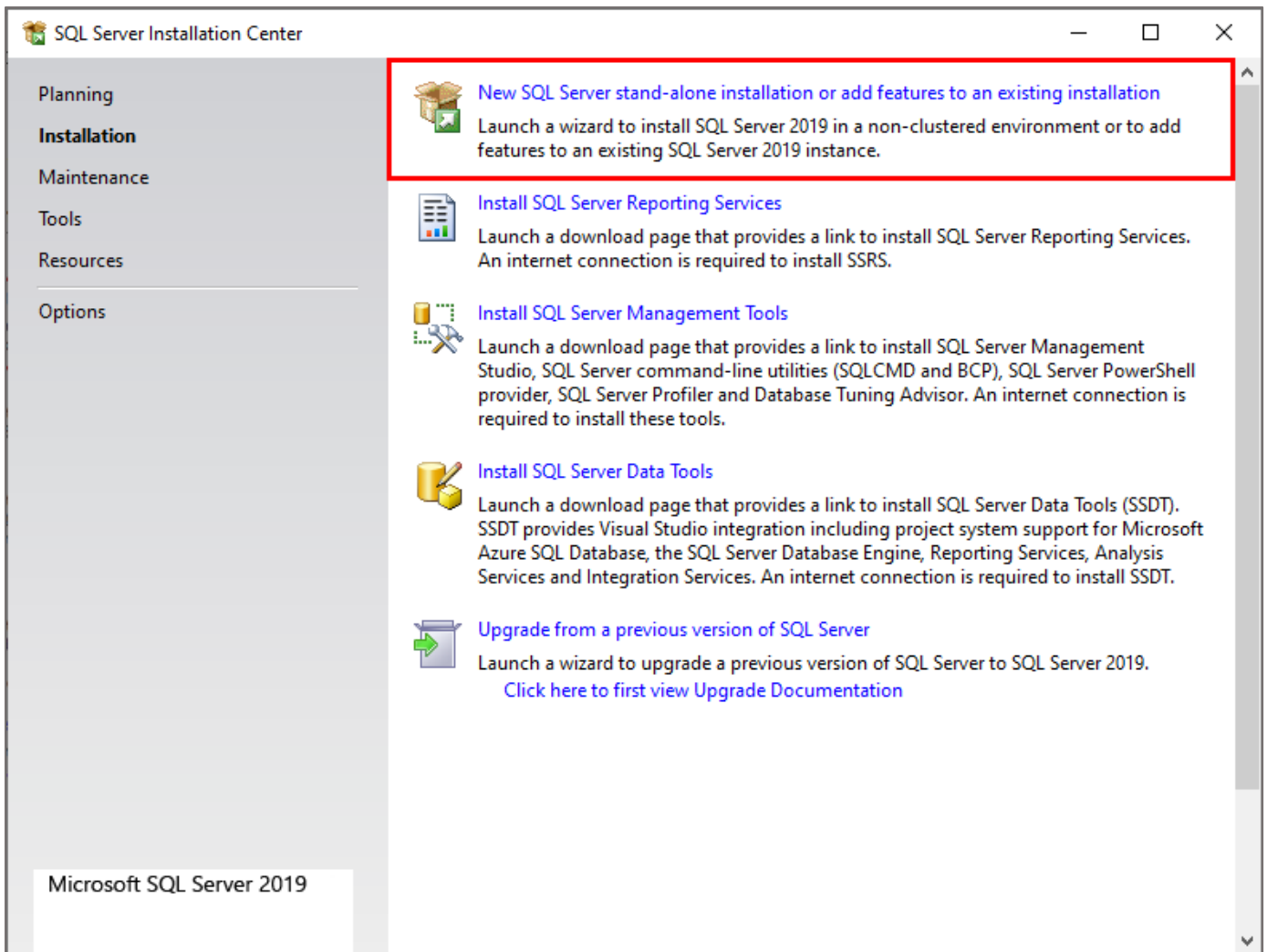


Ensure the SQL Server setup files are available on the server. These will be required to add to the existing SQL installation.

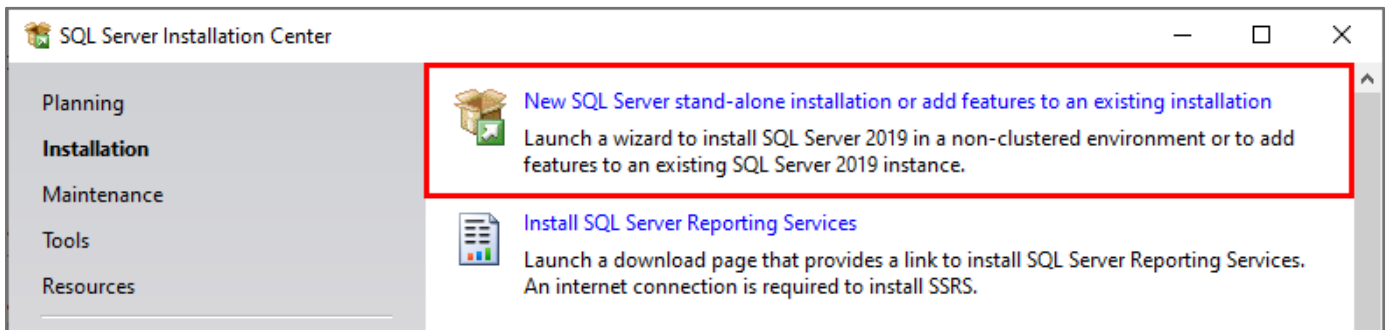
The screenshot shows a file explorer window displaying a directory of files and folders. The 'SETUP' file is highlighted with a red box. The files and folders listed are:

Name	Date modified	Type	Size
1033_ENU_LP	9/5/2020 4:25 AM	File folder	
redist	9/5/2020 4:25 AM	File folder	
resources	9/5/2020 4:25 AM	File folder	
Tools	9/5/2020 4:25 AM	File folder	
x64	9/5/2020 4:25 AM	File folder	
AUTORUN	9/24/2019 6:00 PM	Setup Information	1 KB
MEDIAINFO	9/24/2019 6:00 PM	XML Document	1 KB
Packageld.dat	9/5/2020 4:26 AM	DAT File	1 KB
SETUP	9/24/2019 6:00 PM	Application	124 KB
SETUP.EXE.CONFIG	9/24/2019 6:00 PM	CONFIG File	1 KB
SQLSETUPBOOTSTRAPPER.DLL	9/24/2019 6:00 PM	Application extens...	216 KB

Right click the SQL Server setup file and select 'Run as Administrator' to launch the installation center.



Click the first option 'New SQL Server stand-alone installation or add features to an existing installation'.



Move through the installation wizard until the Installation Type screen. Select 'Add feature to an existing instance of SQL Server 2019' and ensure the correct instance is selected from the drop down. Click the Next button.

Installation Type

Perform a new installation or add features to an existing instance of SQL Server 2019.

Global Rules
Product Updates
Install Setup Files
Install Rules
Installation Type
Feature Selection
Feature Rules
Java Install Location
Server Configuration
Database Engine Configuration
Consent to install Microsoft R ...
Consent to install Python
Feature Configuration Rules
Installation Progress
Complete

Perform a new installation of SQL Server 2019
Select this option if you want to install a new instance of SQL Server or want to install shared components.

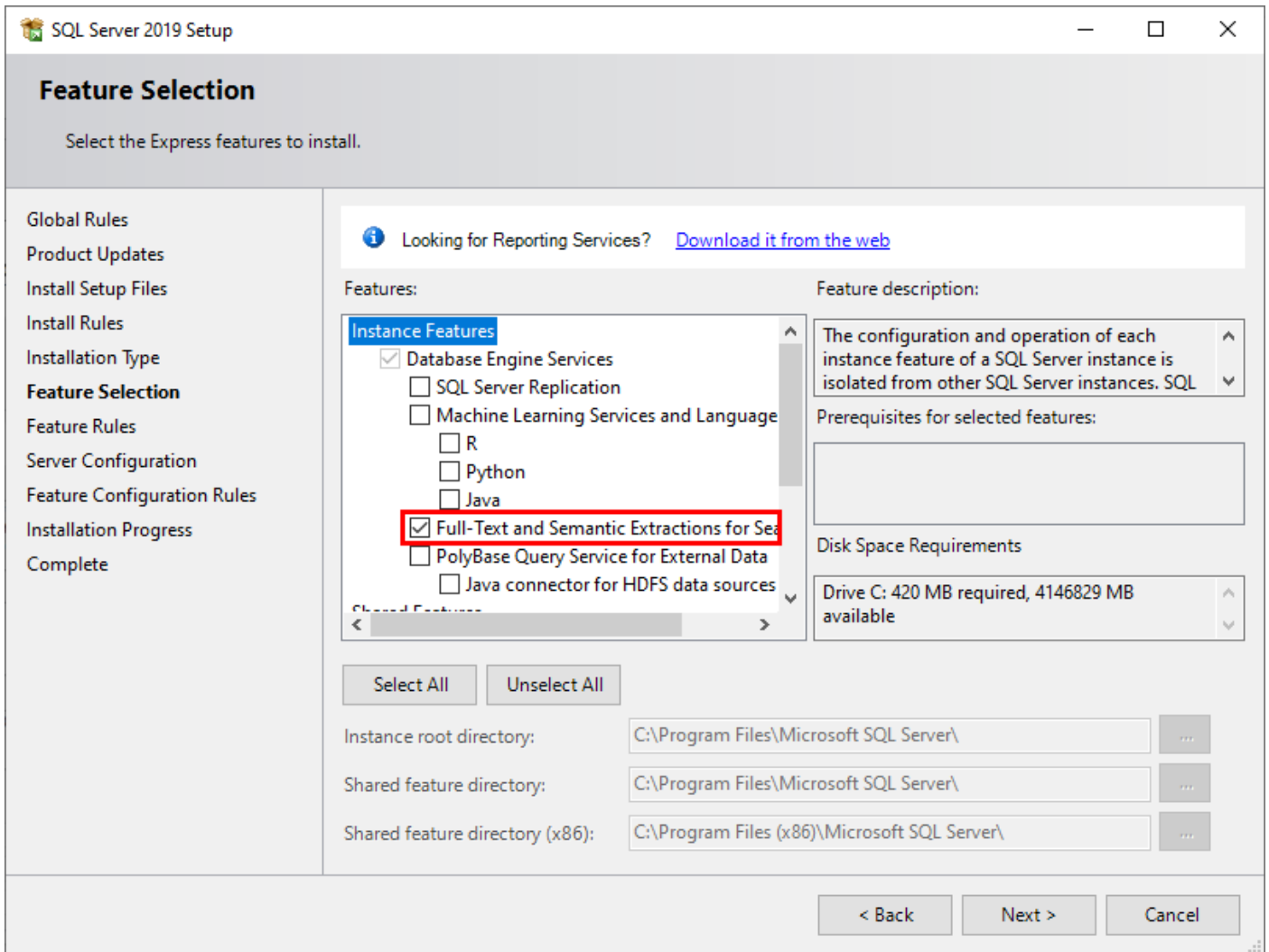
Add features to an existing instance of SQL Server 2019
SENT4EXPRESS
Select this option if you want to add features to an existing instance of SQL Server. For example, you want to add the Analysis Services features to the instance that contains the Database Engine. Features within an instance must be the same edition.

Installed instances:

Instance Name	Instance ID	Features	Edition	Version
SENT4EXPRESS	MSSQL15.SENT4EX...	SQLEngine	Express	15.0.2000.5

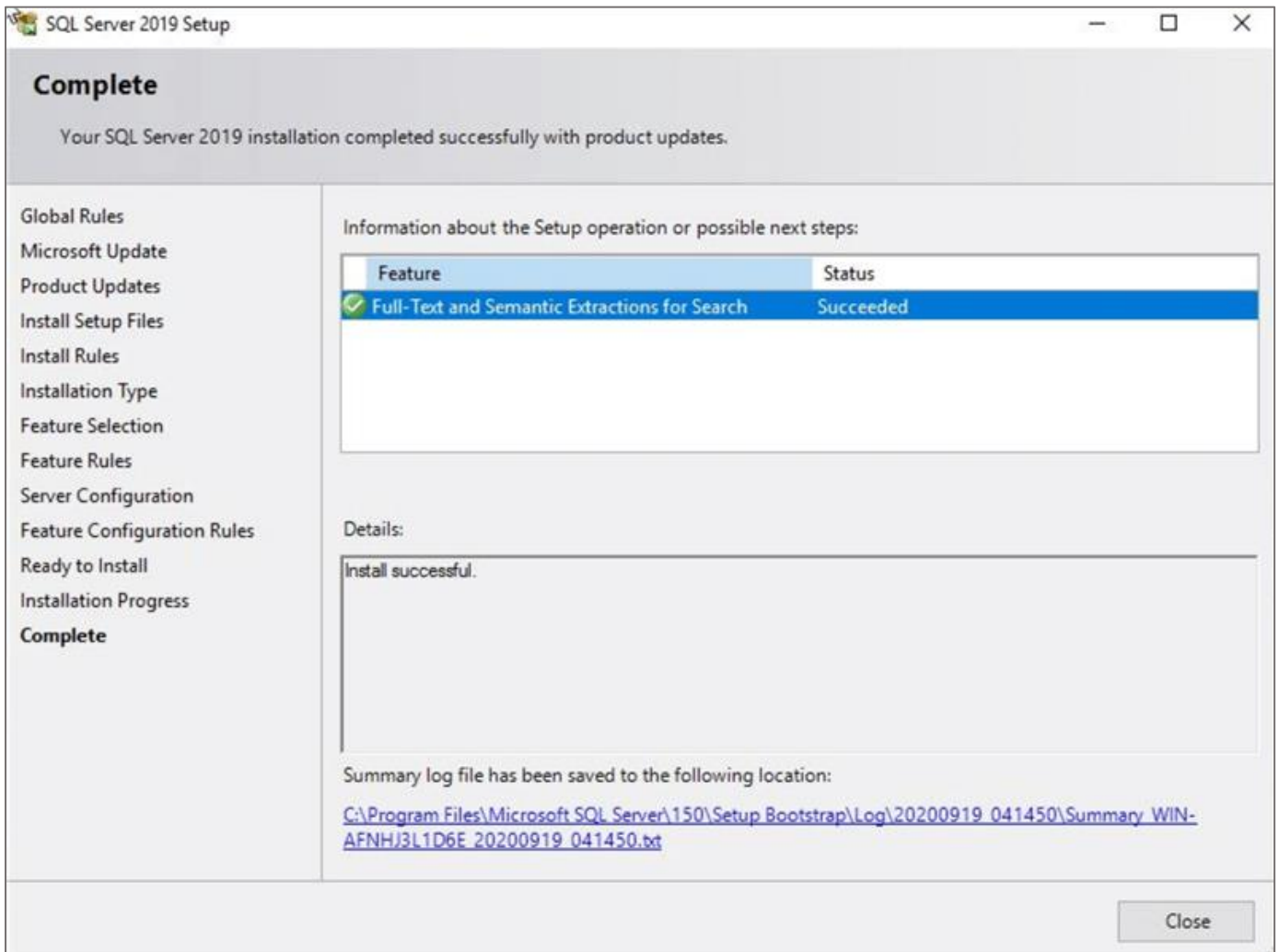
< Back Next > Cancel

Select the feature to be installed. In SQL 2109 this is 'Full-Text and Semantic Extractions for Search'. Click Next to begin the installation.

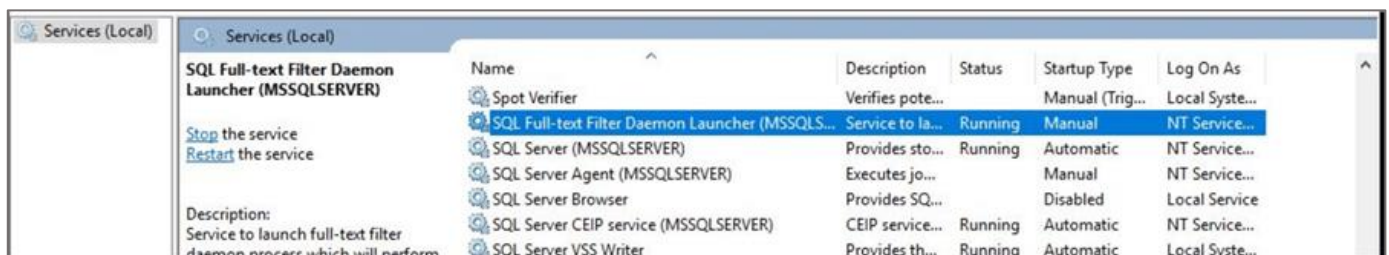


Continue through the wizard to the final screen.

Once installed the following message should appear.

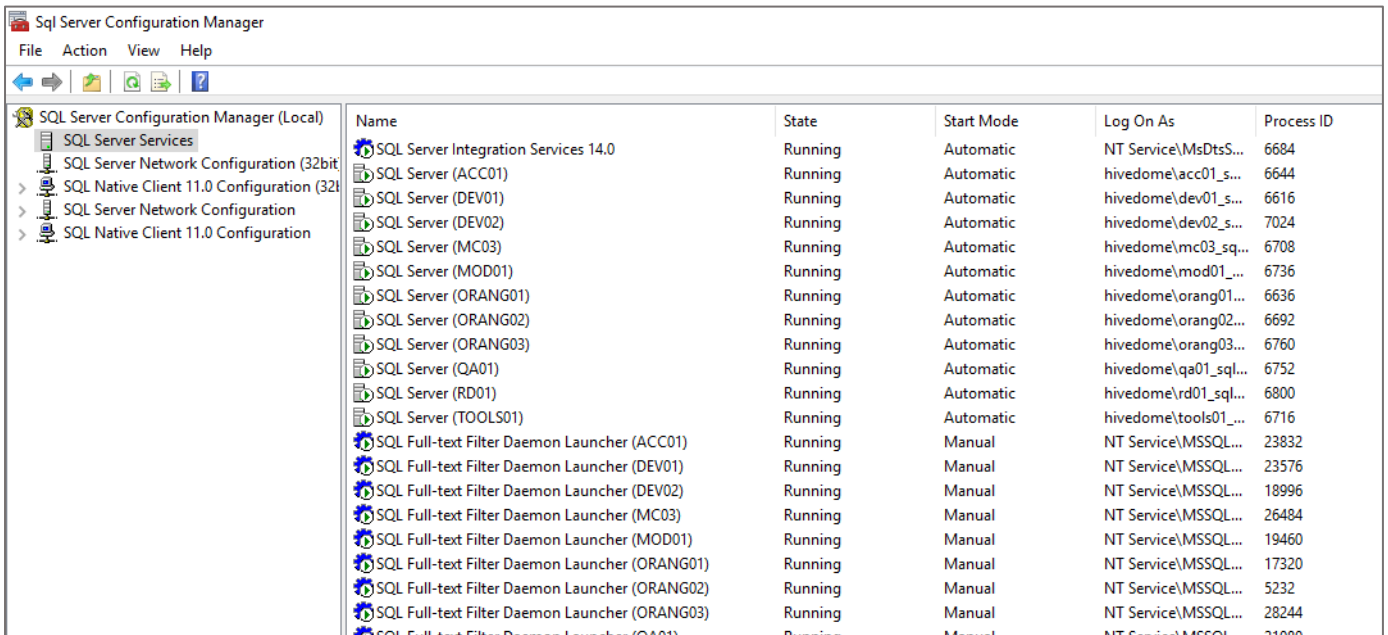


Validate the install by checking Windows services. The new Full Text Filter Daemon Launcher service should now have been installed.

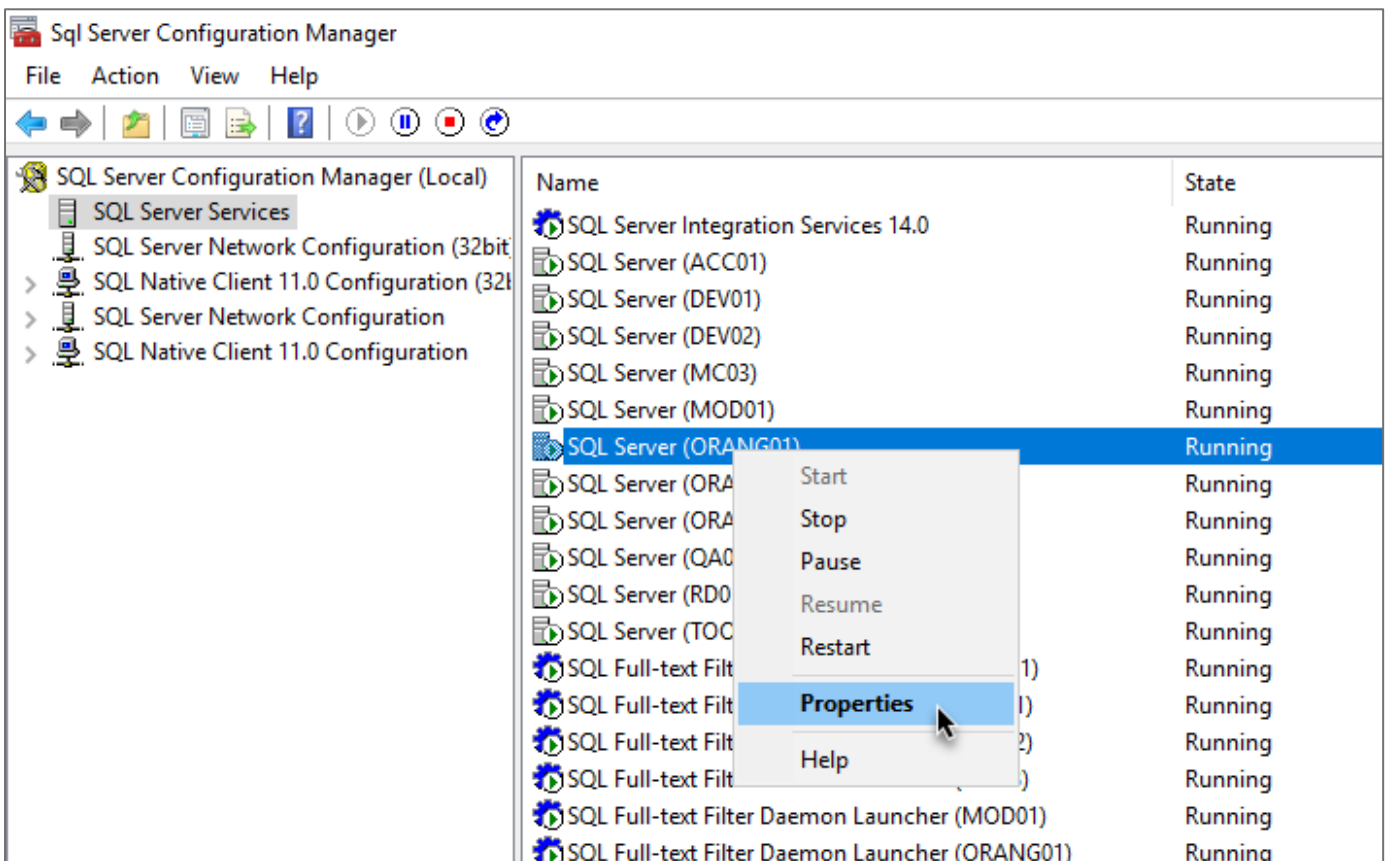


Enabling Filestream

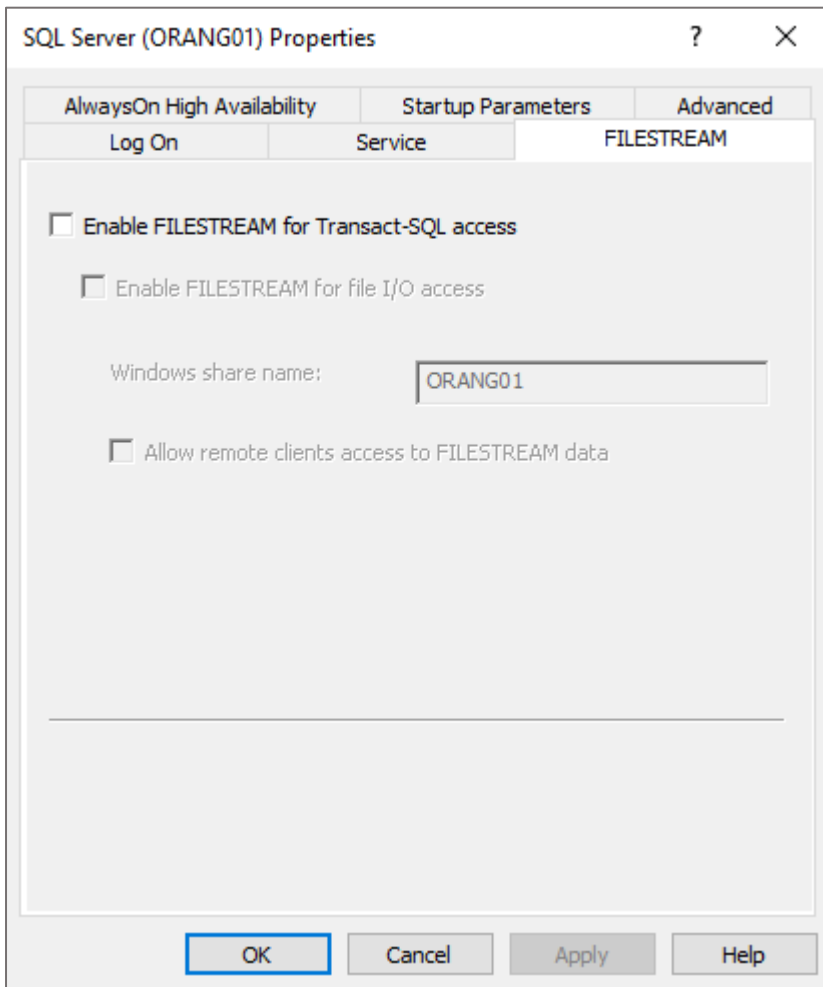
To enable Filestream launch SQL Server Configuration Manager.



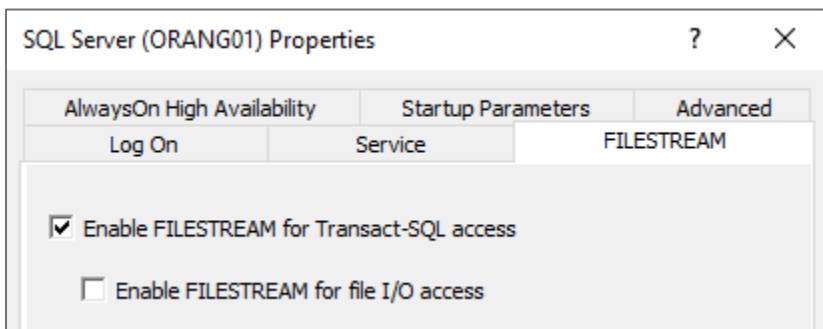
Select the correct SQL Server Service and right click, select properties.



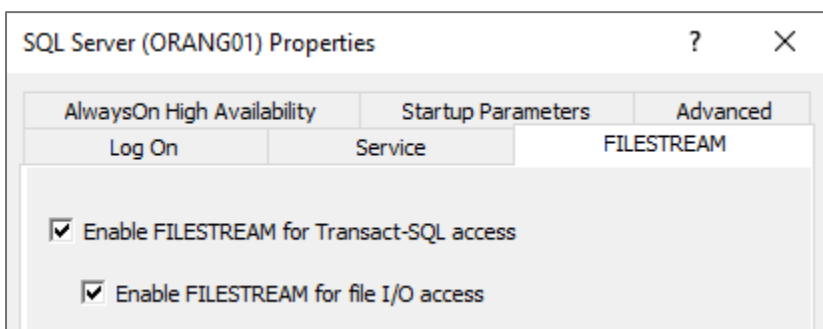
Select the FILESTREAM tab on the Properties screen.



Place a tick in the Enable FILESTREAM for Transact-SQL access tick box.



This will activate the Enable FILESTREAM for file I/O access. This should also be ticked.

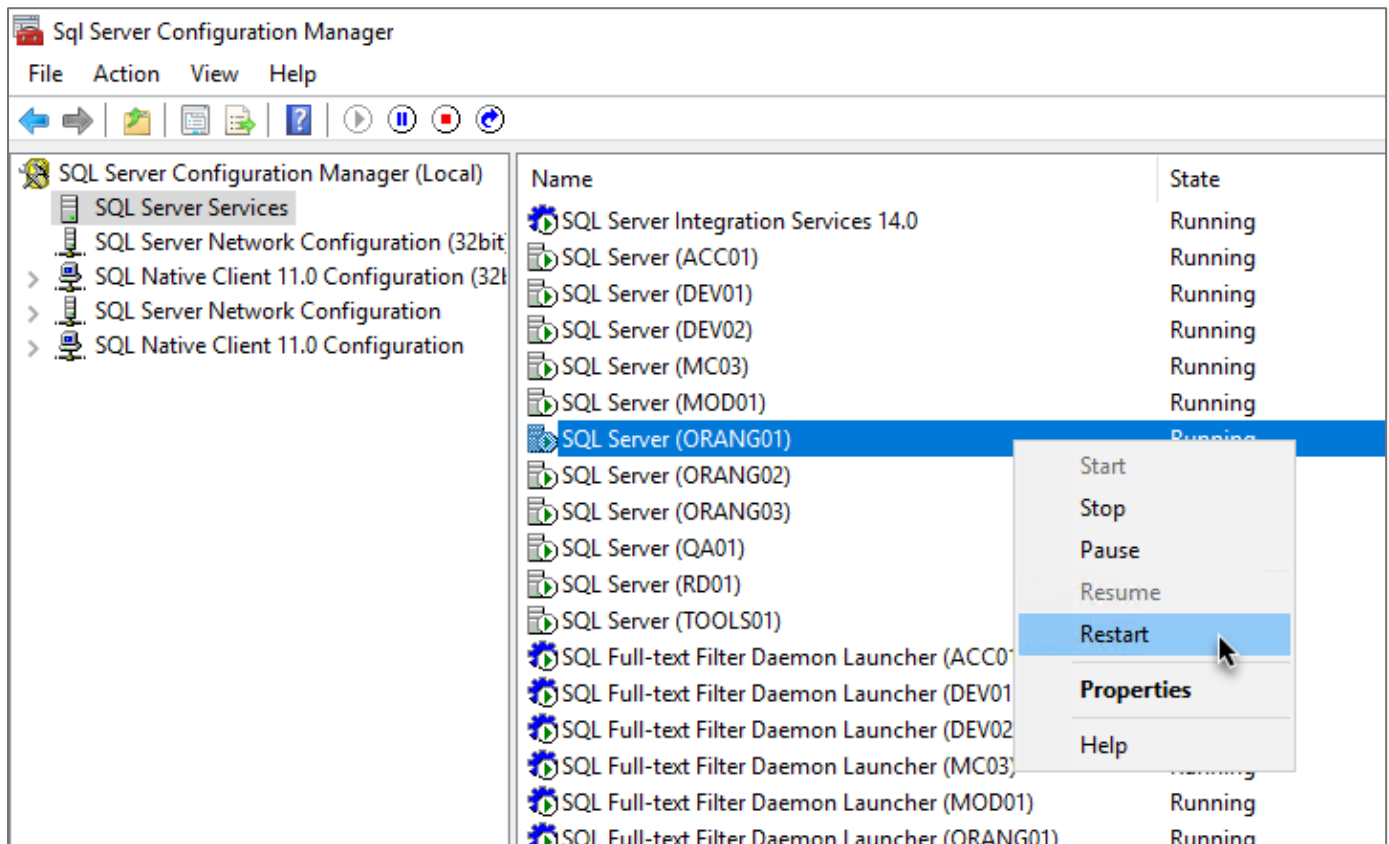


Once these two ticks have been applied, click Apply to save the changes.

Restarting SQL Server Service

To complete this part of the File Stream set up, the SQL Server Service will need to be restarted.

Select the correct SQL Server Service and right click, select Restart.



For more information or assistance with this install, please contact your ITAS representative or support team.